

I DO
SHORT
SALES!

Kim Larson - (480) 861-1848

YOUR "HORSE PROPERTY REALTOR®"

Kim@HappyTrails2you.com

www.KimLarsonSellsAZ.com



Queen Creek near Riggs and Power Rd. Tucked away and Very private horse property on 1.25 irrigated acre with full horse set-up w/6 stalls, turn-out. A nice ranch style home with 4 bedrooms 2 baths, fireplace, huge kitchen with breakfast bar, covered patios, huge play yard for the kids, fully fenced. 2 car garage. Monthly rent is \$1850.00 with normal deposits and available as a lease with option to buy. Call me for an appointment to see this great property.

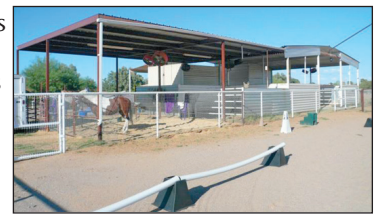
LEASE OR LEASE/OPTION



OWNER WILL CARRY WITH 10% DOWN FOR 5 YEARS!!! Four 1.25 acre gorgeous elevated scenic lots in the SAN TAN mountains. Backs up to the fantastic San Tan Regional Park! This is an opportunity you do not want to pass up!!! Buy one or buy them all! Priced right! Call me for more details and a map. Custom homes all around this property. Absolutely stunning views!!! From \$78,000 to \$83,500.



18909 E. Cloud Rd. Queen Creek, AZ - This home has it all! 2.65 acres, move-in ready, and everything you have dreamed of in an upscale horse property! Features a rustic Santé Fe interior with peeler poles, custom knotty pine cabinets, rock fireplace, Saltillo tile and plenty of bedrooms and bathrooms! Included is a separate full 1 bedroom casita which has its own fireplace as well. Complete horse set-up and 2 lighted



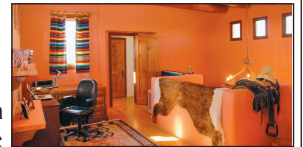
arenas, 6 covered stalls and a large round pen. I told you this home has it all! Bring us an offer... it will go fast. This is a short sale! No waiting on this one! "Approved short sale price from the bank - \$425,000." We lost our buyer right at the approval.



20856 E. Mewes Rd., Queen Creek, Super stunning "Orchard Ranch" 5BR/3BA, 3,500 sq. ft. custom beauty on 1 irrigated acre. Open bright kitchen, stellar ceilings, picture windows to gorgeous views, granite throughout, wet bar, upgrades galore, very custom landscaping. *Horse trails in the neighborhood.* This house is priced to sell! \$399,900 **NOT A SHORT SALE OR BANK OWNED!** Come make us a fair offer!



5726 E. Forest Apache Junction. On 3.75 acres this is a double wow! With million dollar views at the foot of the superstitions, this is such an artistic beauty! A stunning custom Sante Fe with an interior that screams artistic and cultural beauty! It is a real knock out!! It really stands out from the crowd! The minute you enter you have vegas, wood floors and tongue



in groove ceilings with the niches and stairs that enhance the different floor levels just to mention a few of the outstanding features! Then you can invite your guests to soak up the views from your backyard natural desert paradise. They may just want to stay the night in your cute casita, that is separate from the home by a flagstone patio covered by natural wood beams. This home is a "show-piece" and would make any owner want to brag for years. You will love the horse set-up which includes a round pen and tack shed. Offered at \$629,900 Come see... This is a keeper!



0 N. Delaware, Apache Junction - 1.25 acres of vacant land at the foot of the Goldfield Mountains and within ¼ mile of state land where there are miles of riding trails! You will love this elevated lot which allows mobiles or you can build your custom dream home. Beautiful mountain and city light views! Priced to sell at \$49,900!

Professional Shop



42464 N. Murphy Ave. Q.C. Nice newer ground set double wide on 4.8 irrigated acres with a "humongous" shop.(See photo) No joke! Loads of fruit trees, includes an easy access from Ironwood. You are going to want to check this one out with all it has to offer. \$399,900.

Lease Option Available! Call for Details!

